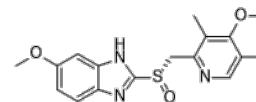


**Product Name** : Esomeprazole  
**Cat. No.** : PC-24746  
**CAS No.** : 119141-88-7  
**Molecular Formula** : C<sub>17</sub>H<sub>19</sub>N<sub>3</sub>O<sub>3</sub>S  
**Molecular Weight** : 345.42  
**Target** : Proton Pump  
**Solubility** : 10 mM in DMSO



### Biological Activity

Esomeprazole is a proton pump inhibitor that reduces stomach acid secretion by inhibition of the H<sup>+</sup>/K<sup>+</sup>-ATPase in the parietal cells.

Esomeprazole is the (S)-(-)-enantiomer of omeprazole for treatment of dyspepsia, peptic ulcer disease, and gastroesophageal reflux disease.

### References

Wayne Goh, et al. J Pharm Pharm Sci. 2014;17(3):439-46

**Caution: Product has not been fully validated for medical applications. Lab Use Only!**

E-mail: tech@probechem.com